

Accessory Shoppe

It's All about You!

"Girl Talk" Newsletter

December 2008

Volume 1, Issue 2

Seasons



Greetings

"On the Road Again"...

Look out Thelma & Louise... Shirley and Betty have a road trip scheduled in January!

We will be heading to Georgia early in the month to visit the Atlanta Trade Show. We'll be looking for new treasures to package with our linens. We're excited and hope to find a variety of goodies to offer to you!



Top Honors at Miss Bailey's!

We're proud to announce that we are a "Top Pick" at Miss Bailey's Poppy Patch! Joanie selected our Sassy Zebra tote and our Fleur de leis towel set as some of her top picks this month.

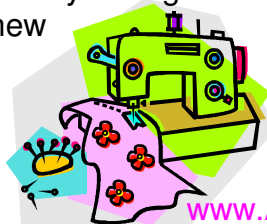


Please visit www.missbaileys.com and enjoy all that Miss Bailey's Poppy Patch has to offer. For those in the St. Louis metro area, stop by Miner Square in Glen Carbon, Illinois and visit with Joanie and her staff. The shop is simply magical during the holiday season!

Special Production News...

Shirley recently acquired wonderful new fabrics – faux ultra suedes, silks, velvets, designer name fabrics, and her favorite... animal prints!

Production has already begun on a variety of bags and totes featuring these new fabrics. Check our website in the very near future for her unique creations.



www.AccessoryShoppe.biz

New in 2009...

Our "Girl Talk" Blog!!!

Be sure to visit our site often in the New Year. We will be starting our "Girl Talk" blog - full of creative tidbits from two minds that are always whirling and creating!



New Arrival at Miss Bailey's from Accessory Shoppe!

BIG NEWS... our baby items are now featured at Miss Bailey's Poppy Patch!



If you're looking for that perfect gift to welcome a new bundle of joy, stop by and see what we have to offer. Our baby line includes a variety of items – all can be personalized especially for that special little someone!

Wishing you and yours a joyous holiday season!

We look forward to spending an exciting 2009 with you all!

*- The Accessory Shoppe Girls
Shirley and Betty*